



Beyond the Horizon

A LOOK INTO THE FUTURE OF A DEREGULATED MARKET

LASA National Congress – October 2018

OVERVIEW

- A challenging year
- Inevitable change
- A new horizon – A future system?



A CHALLENGING YEAR

- Growing (**and changing**) older population base
- Funding Cuts
- Investor confidence and RAD/DAP changes
- Negative Media
- Royal Commission into Aged Care
- Preparation for the new regulatory standards

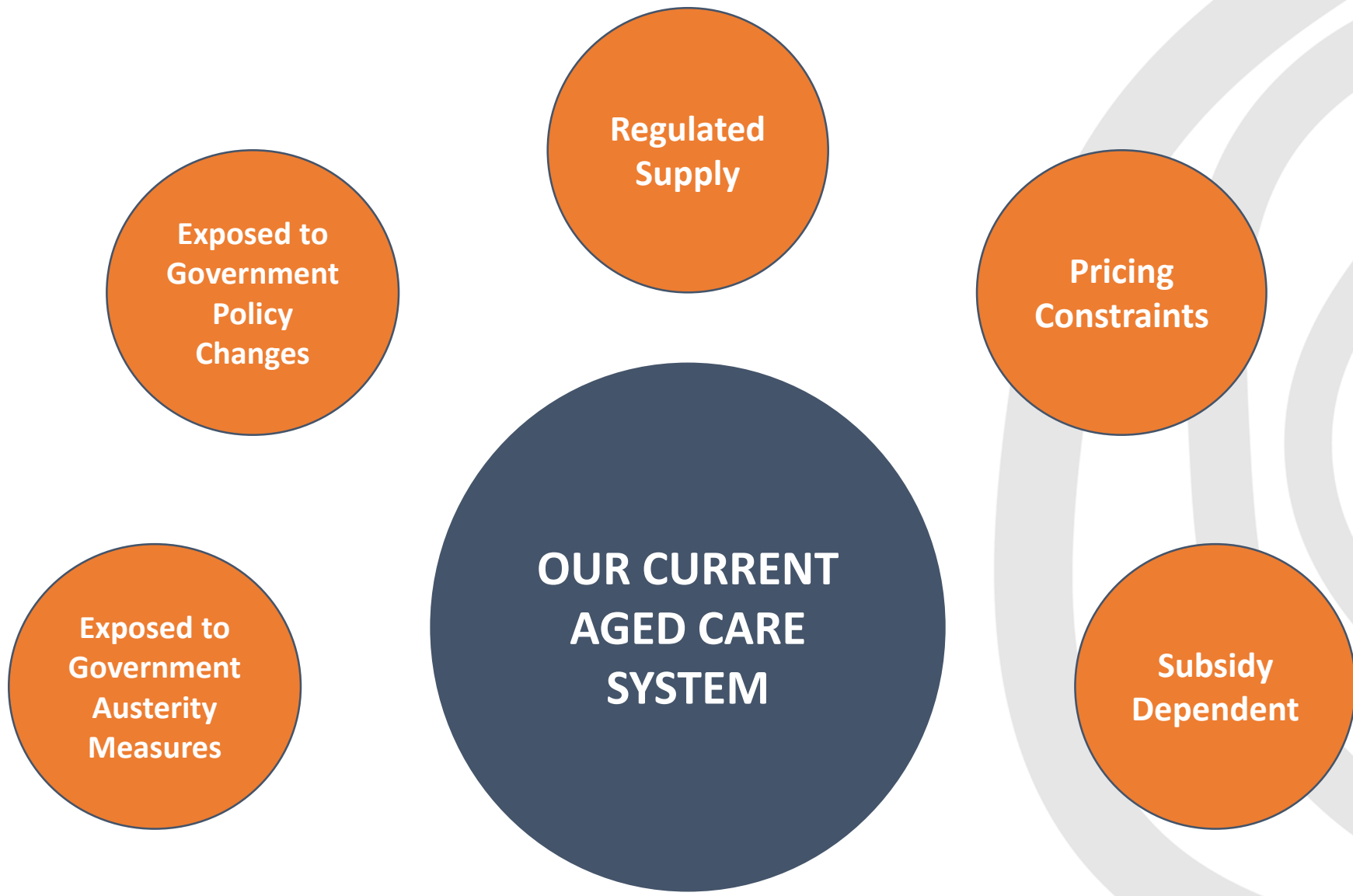
EXISTING SENIORS' ACCOMMODATION AND CARE SERVICES

**RETIREMENT
LIVING**

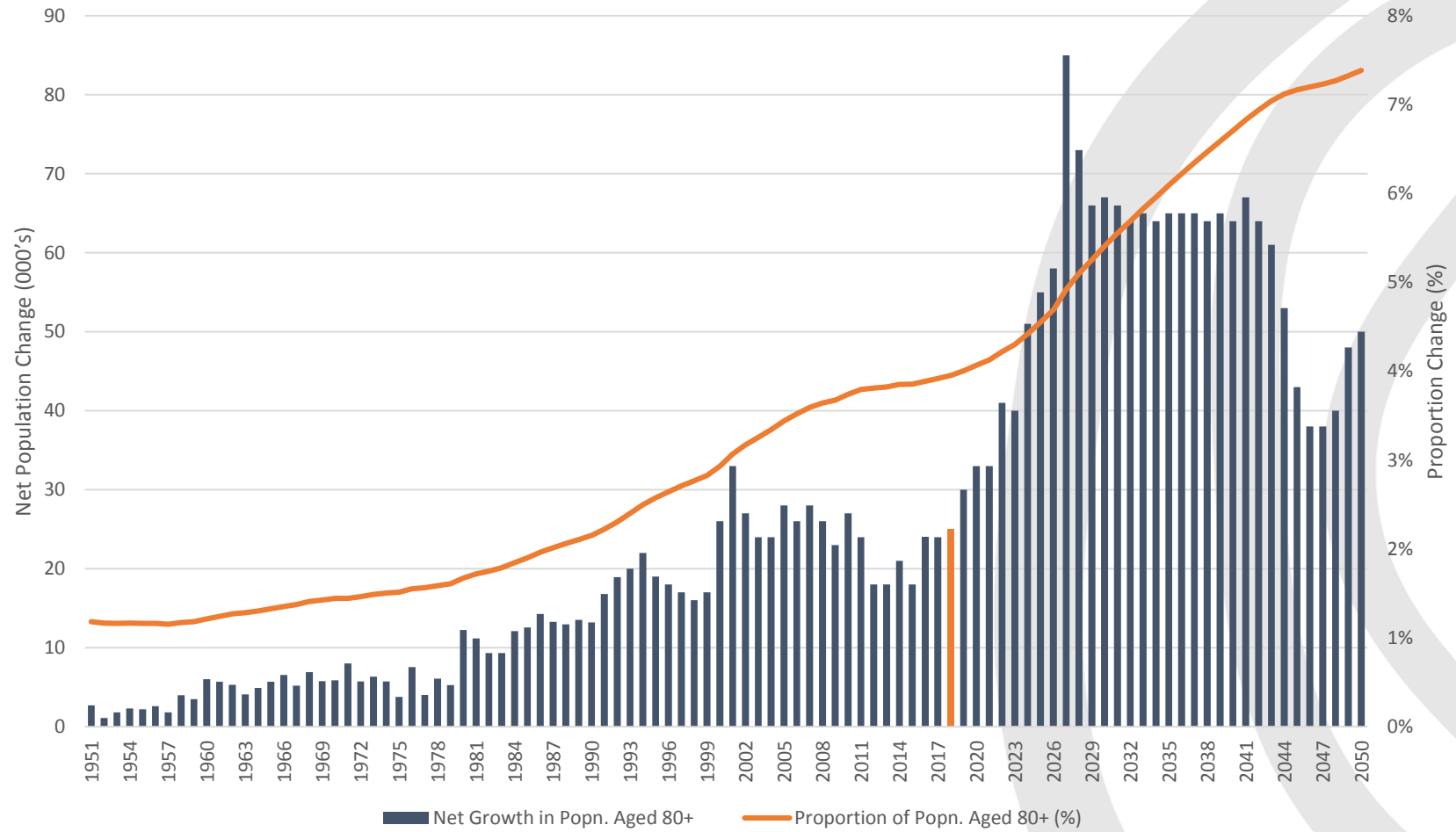
**HOME CARE
AND
SUPPORT**

**RESIDENTIAL
AGED CARE**

CHANGE IS INEVITABLE



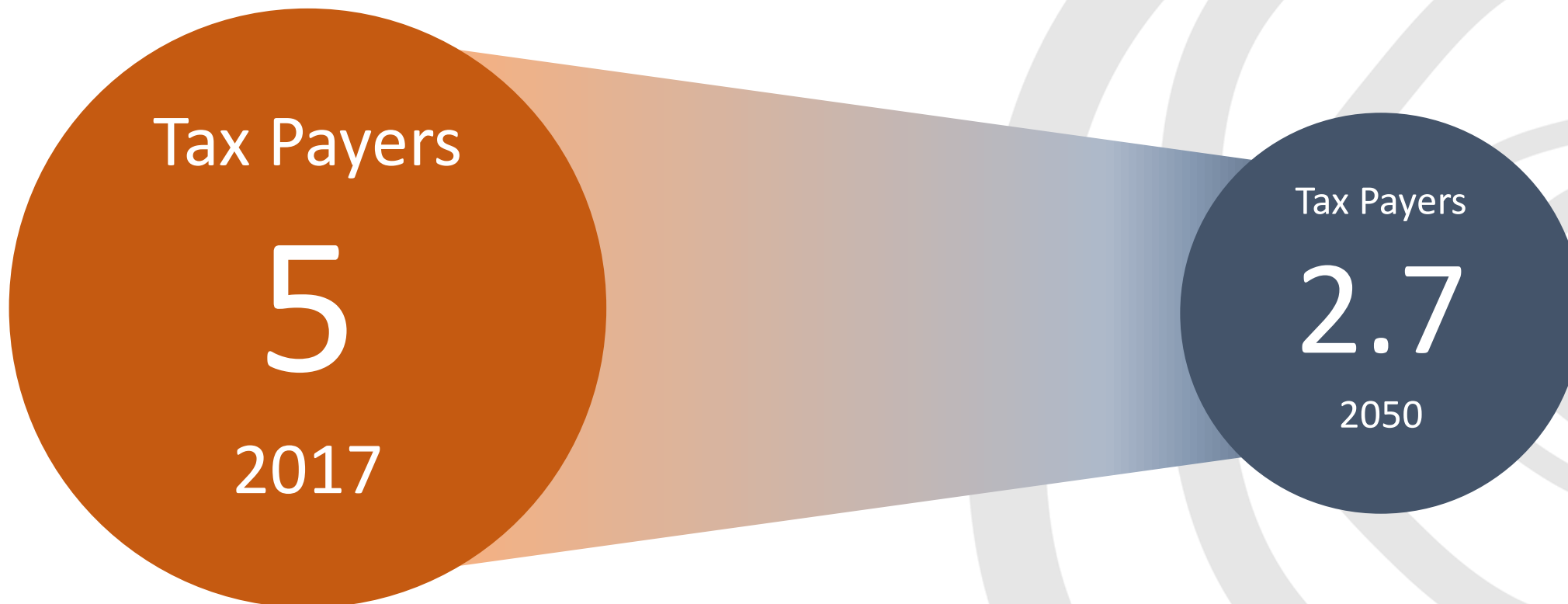
CHANGE IS INEVITABLE— AGEING POPULATION



Source: ABS Population Projections Australia 2010 to 2050

CHANGE IS INEVITABLE— FISCAL PRESSURE

Ratio of Tax Payers to Pensioners by 2050



CHANGE IS INEVITABLE— CONSUMER PRESSURE

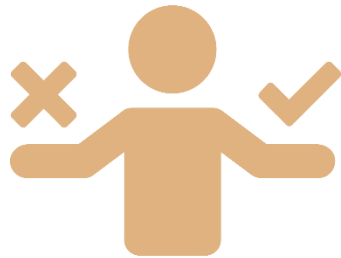
Changing Consumer Characteristics

Choice and Control

- Where they live
- What they pay
- What services they receive



Asset rich, income
poor



Higher expectations
& choice driven

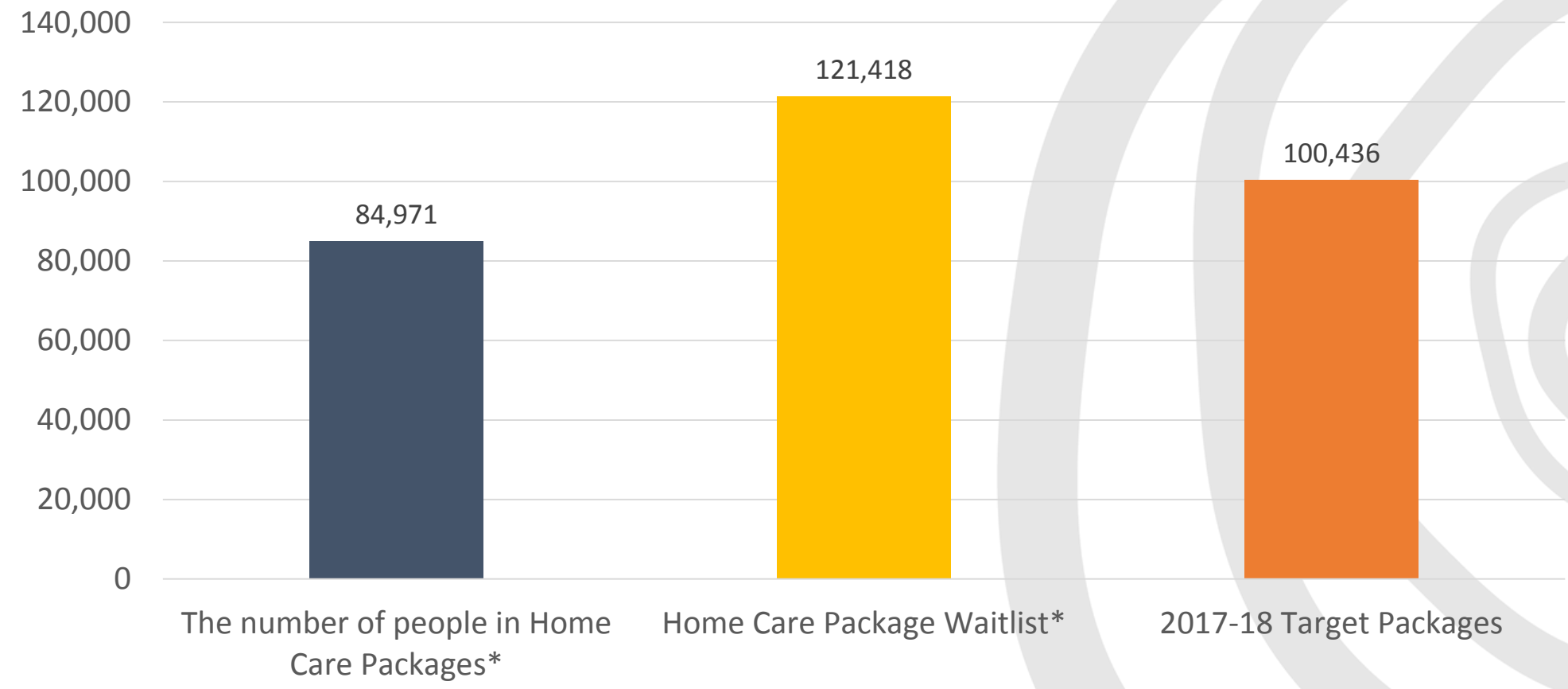


Seek lifestyle &
independence



CHANGE IS INEVITABLE— HOME CARE PACKAGES

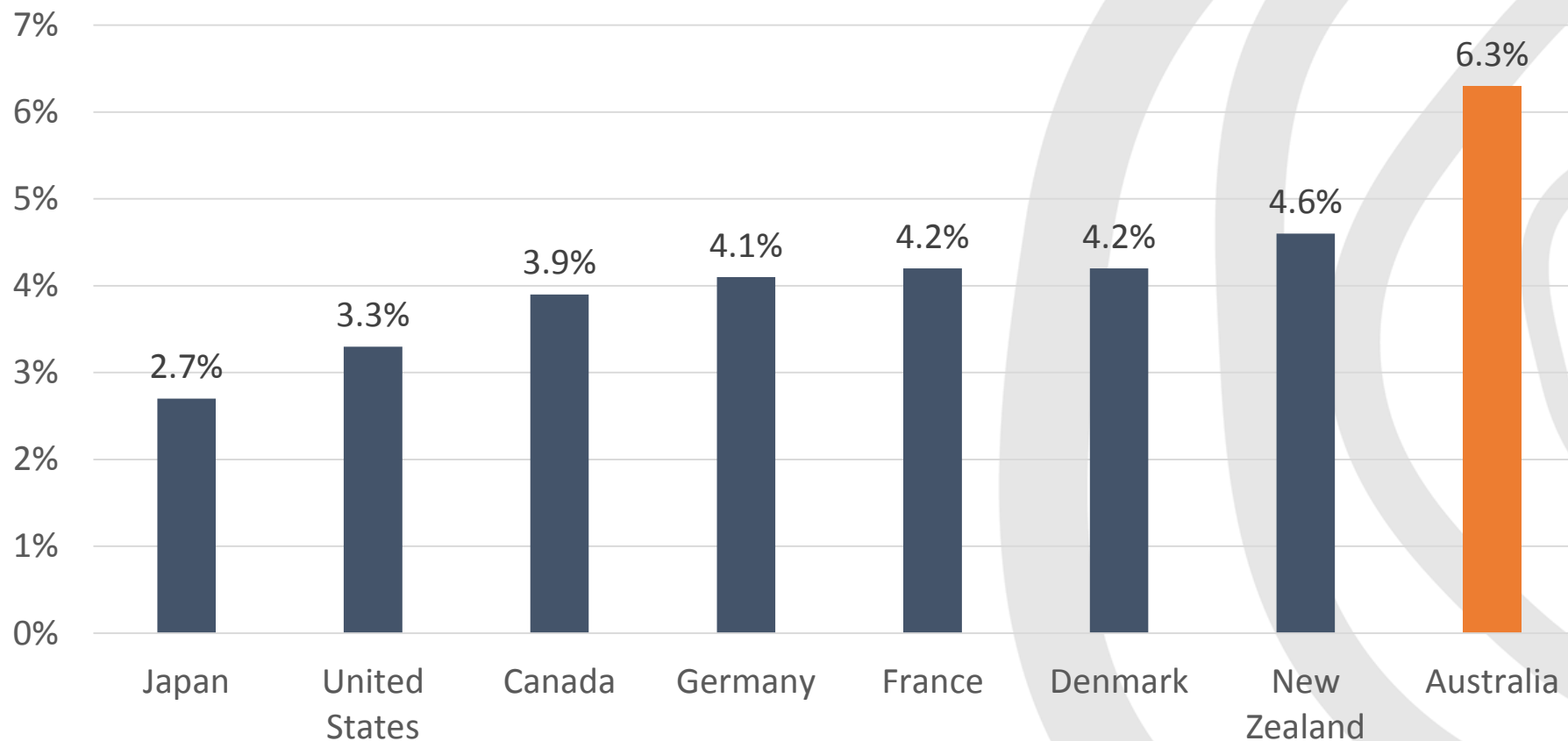
Growing Waitlists



Source: * Home Care Packages Program Data Report – June 2018
** Budget 2016-17 Targets

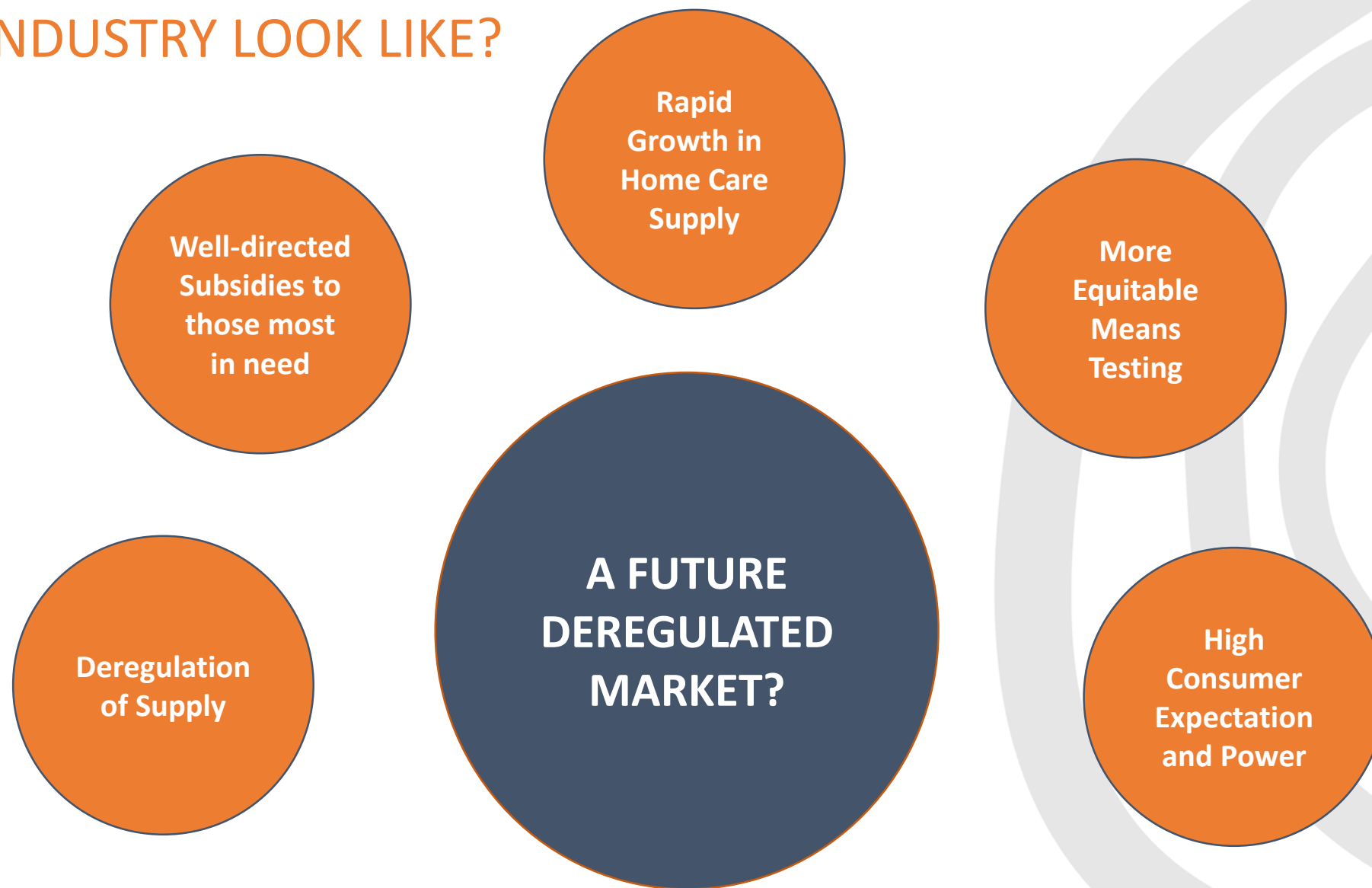
CHANGE IS INEVITABLE – LONG TERM CARE

Proportion of Persons Aged 65 Years and Over Receiving Long Term Care (Residential)



Source: OECD Health Data 2016, or latest year available year for each Source: OECD Health Data 2016, or latest year available year for each country.

WHAT MAY THE FUTURE OF THE AGED CARE INDUSTRY LOOK LIKE?



QUESTIONS?

